

AirMobile Assessor

AirMobile Assessor Service

AirMobile Assessor is a convenient and cost effective way to address Wi-Fi assessment and helps keep track of wireless network landscape in the vicinity of your premises. The solution includes software PDA or PC agents that scan the air and report results to AirMobile database server. End users can provide their own hardware of choice to install the agent software on. Separate database with secure login is provided as a part of the solution. Web based interface is intuitive and easy to use.

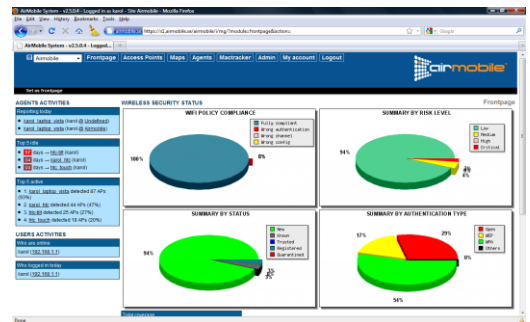
Wi-Fi is a challenging task; AirMobile finds the security concerns within minutes. The goal with Wi-Fi assessment is to find any security vulnerabilities in the network and create reports that detail the security concerns. AirMobile Assessor product will help to speed up and automate the assessment task.

Initial assessment

After the assessment, data is transferred by wired or wireless network to the AirMobile server, results are triangulated and put on maps which are easy to analyze. The first assessment picture from Google Earth shows all networks in the area, WEP, WPA and open, we usually note the target networks either have WPA or in some cases Open Guest networks. It's easy to zoom in on important information and to create easy to understand reports.

AP tracking

Another tool for pinpointing the position of the AP is the MAC tracker feature you can run on the PDA with AirMobile software; both sound and signal strength will help you to judge the

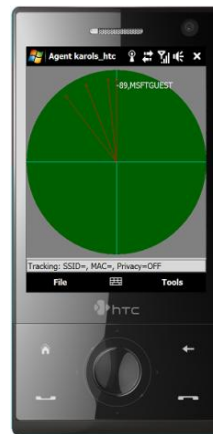


Server Console

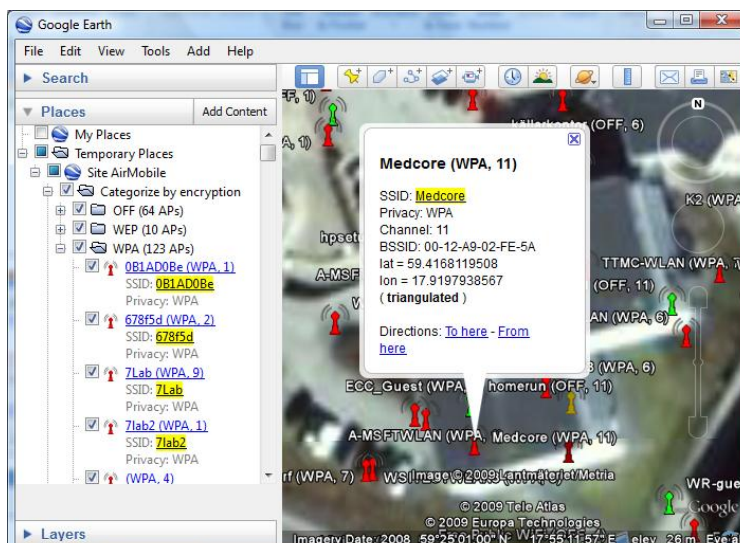
position of the AP or Ad hoc network. In case you need to perform an indoor assessment AirMobile supports import of maps into the PDA so that networks can be localized indoor where we cannot use GPS for triangulation. AirMobile Server and AirMobile agents are built to manage large corporate networks 24/7 with many automatic features saving time and money while taking actions on the security risk of unknown Access Point connected to the network.

How to know who and what is a Wi-Fi threat!

After your initial assessment there is a good chance you have found some interesting Wi-Fi vulnerabilities in and around your target buildings. AirMobile server positioning and Google Earth integration will quickly help you to judge which networks to focus on, one of the issues with Wi-Fi assessment is the huge number of networks you will find in the air. The AP tracking feature is a quick tool for you to locate the exact position of the AP directly from the air. If you have access to the targets wired network you can try to find the MAC address of the rogue AP thru it. If found and if this network has a known IP address you can ping where dealing with a real dangerous network. AirMobile have automated this feature by using an AirMobile PC agent that can be installed in the target network to automate alarming when this happens. You can also use our Mac tracker SNMP feature in the AirMobile server to find if the rogue AP really sits in the target network. These are 3 methods to judge if a rogue AP or Ad-Hoc network is a threat to your infrastructure, they have all advantages and disadvantages but we support them all for your convenience.



AP Tracking with MAC tracker directly in PDA



Triangulation in Google Maps

Mobile agents

Unique solution with highly mobile PDA agents

All 802.11 standards

Due to usage of standard PCs and PDAs 802.11abgn standards are easily supported

Google Earth integration

Access Points' positions are triangulated and visualized in Google Earth

AP tracking

Sound and visual representation of signals strength makes finding physical location of AP an easy task

Google Earth integration

Access Points' positions are triangulated and visualized in Google Earth

PDA Agent requirements

- Windows Mobile Professional 6.1 or 6.5
- Wi-Fi support, 802.11 b and g recommended
- Ability to detect hidden Access Points (recommended)
- GPS support (optional)

PC Agent requirements

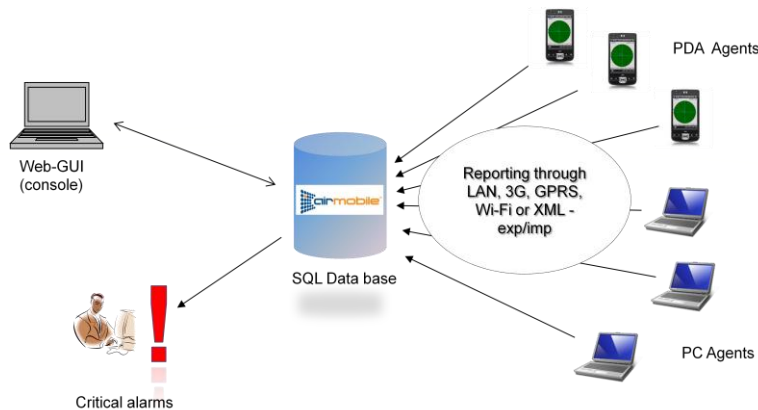
- Windows XP or Vista
- Wi-Fi support, 802.11 a,b,g and n recommended



Finlandsgatan 56
16474 Kista
SWEDEN
+46 8 7505655
www.airmobile.com
info@airmobile.se



Other features which help is positioning APs and Ad-Hocs on maps. For example you will see very fast if known SSID:s within target network has week encryption, you can verify how many of the target networks are visible from outside the target building vs inside, there are a lot of issues to report on and you will always find something.



AirMobile system components

System layout

One or several PDA's and/or PC agents store data during automated scanning and reports to AirMobile server running SQL database. Reporting can be accomplished wireless thru Wi-Fi or GPRS and wired by LAN. Users login to the AirMobile SQL server to receive reports and triangulate position of AP:s and Ad Hoc networks on maps. The Server will alarm when it finds rogue AP or other security concerns. These alarms are being sent as emails to security admin. The server can handle hundreds of agents and different sites (buildings) our customers want to protect. The system is developed for enterprise customers with hundreds of sites to protect. The movements of remote agents can be verified by the security admin so he can make sure local admins do their job.

- Pre-configured Linux and MySQL 1u appliance

AirMobile PDA Agent:

- Runs on Windows Mobile Professional 6.1 or 6.5 for outdoor positioning use GPS
- Scans for Access Points based on manageable schedule
- Reports to AirMobile Server. via Wi-Fi, GPRS or the regular network
- Tries to connect to open Access Points and pings pre-defined IP-address
- Does not need dedicated hardware (PDA's)
- Server and agents are built to manage large corporate networks 24/7

AirMobile Server

- Position, log and manage found Access Points
- Sort Access Points by threat level
- Talks to network equipment via SNMP to find where the Access Point is connected
- Built in database for Unknown, Known, Trusted and Quarantined Access Points
- Pre-configured Linux and MySQL 1u appliance

AirMobile PDA Agent

- Scans for Access Points based on manageable schedule
- Reports to AirMobile Server. via Wi-Fi, GPRS or the regular network
- Tries to connect to open Access Points and pings pre-defined IP-address
- Does not need dedicated hardware (PDA's)

Server and agents are built to manage large corporate networks 24/7 with many automatic

Peace of mind for the Network Security manager

AirMobile system is true enterprise client server application. Hundreds of AirMobile agents and buildings can be supported by one secure server; you will have alarms per sites, radius login, agent surveillance which will verify your policies. Your policy can be agent should move within target building at least once every day in a certain country and if that is not true you will have an alarm sent off. The agent does not need to be dedicated AirMobile so it can be used for other missions by the users. AirMobile agents are extremely automated so no IT professionals need to carry them around; we have traditional security people, postal personnel and cleaning personnel scanning with AirMobile.

How to buy as a service or as a perpetual system

AirMobile can be purchased as a yearly service for Wi-Fi assessments. AirMobile SW is downloaded over the internet to existing PDA and AirMobile Sever login is emailed to Scanning vendor. Some customers want to be in control of the AirMobile server and in these cases we sell a perpetual system. You will be up and running immediately.

AirMobile Server:

- Position, log and manage found Access Points
- Sort Access Points by threat level
- Talks to network equipment via SNMP to find where the Access Point is connected
- Built in database for Unknown, Known, Trusted and Quarantined Access Points

No	Agent	Owner	Phone No.	Last active	Idle days so far	Expiring days	Working days	Coverage (over 94 APs)	Reports
1	karol_laptop_vista	karol		2010-05-14 09:04:08	00	22	12 ~ 55%	87 ~ 93%	66%
2	htc_touch	karol		2010-05-10 16:45:45	04	5	1 ~ 20%	18 ~ 20%	2%
3	karol_htc	karol		2010-05-10 14:04:49	04	53	12 ~ 23%	44 ~ 47%	24%
4	htc-bit	karol		2010-04-27 12:59:53	17	25	4 ~ 16%	25 ~ 27%	9%

Agent Performance sheet



Finlandsgatan 56
16474 Kista
SWEDEN
+46 8 7505655
www.airmobile.com
info@airmobile.se