

AirMobile

What is AirMobile?

AirMobile is a convenient and cost effective way of addressing Wi-Fi assessment and keeping track of wireless network landscape in the vicinity of your premises. The solution includes mobile PDA or PC agents and web database Server. Agents scan the air and send results to AirMobile Server. Separate database with secure login is provided as part of the solution. Web based interface is intuitive and easy to use.

Why AirMobile?

The goal with Wi-Fi assessment is to find any security vulnerabilities in the network and create reports that outline the security concerns. AirMobile will help you speed up and automate the assessment task at a reasonable cost. Entire solution is vendor independent and does not require any integration with existing Wi-Fi infrastructure. AirMobile is thus perfectly suited for those places where Wi-Fi is not allowed and Wi-Fi surveillance is required or advised.

How is it different?

AirMobile uses Windows Mobile (WM) PDAs or Windows PCs as agents. AirMobile software agent runs in the background and turns any PC or WM based cell phone into Wi-Fi sensor. This keeps initial investment at a low level. Additional benefits come from the fact that agents are mobile and cover big area.

Unique features

AirMobile's innovative approach to Wi-Fi security makes it possible to introduce additional unique features. Those are mainly possible due to the fact that PCs and PDAs are highly versatile platforms not just purpose-built hardware devices that are traditionally used for Wi-Fi surveillance.

Most PDAs are equipped with GPS receiver, which records Agent's position and Wi-Fi signal strength. This information makes it possible to triangulate position of a Wi-Fi source, for instance a rogue Access Point. To offload PDA Agents, triangulation is performed on the Server and results

are presented in Google Earth environment.

PC agents scan the air but more often connected to the corporate LAN which makes it possible to scan the wired network for all MAC addresses. They compare air side and wire side to locate one of the most dangerous Wi-Fi threats – unauthorized APs connected to the corporate network.

PDA Agent has AP tracking functionality with visual and acoustic (Geiger counter) presentation of the signal strength. It is used to pinpoint AP location in indoor environment where GPS signal is not available.

Database Server

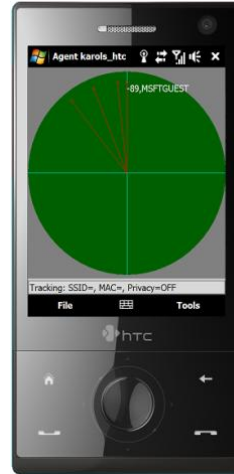
Multiple Agents discover Wi-Fi devices in the field and send data to AirMobile Server which is responsible for storing, categorizing, risk assessing and many other administrative tasks. Wi-Fi devices are grouped in Sites, which typically represent building or campus. Each Site is managed by its own admin and creates site oriented reports or alarms. Server is

also responsible for AP triangulation and generation of PCI reports.

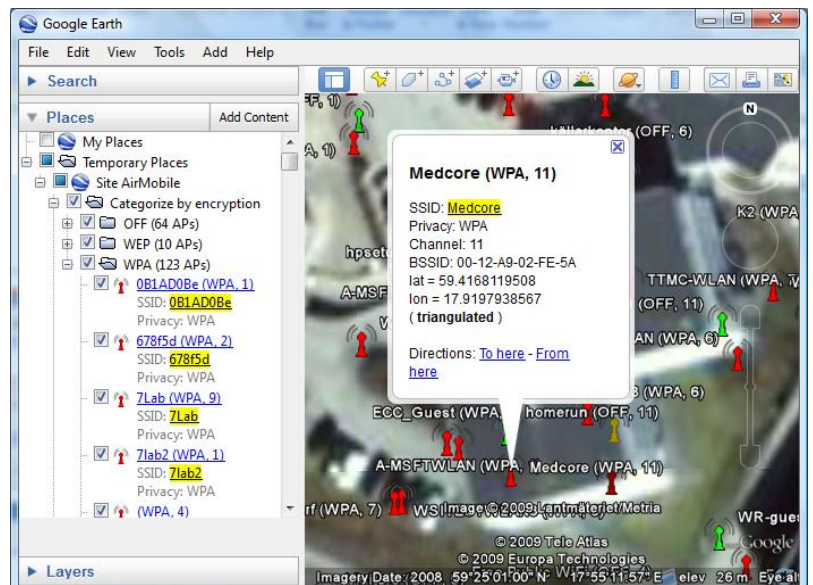
The Server's multi user environment with users having access to specific sites is convenient for large installations.

PCI Wireless Compliance

AirMobile creates Wireless Compliance reports according to Payment Card Industry Data Security Standard v. 1.2.1. Periodic reports are issued at least quarterly for all the sites. Each compliance report lists wireless devices within given Cardholder Data Environment with all violations list and responsible Wi-Fi devices.



AP Tracking with MAC tracker directly in PDA



AP Positions presented in Google Earth

Mobile agents

Innovative solution with mobile Agents

PCI Wireless Compliance

PCI DSS Compliance reports generation for all Sites

Google Earth integration

Access Points' positions are triangulated and visualized in Google Earth

AP tracking

Sound and visual representation of signals strength makes finding physical location of AP an easy task

PDA Agent requirements

- Windows Mobile Professional 6.1 or 6.5
- Wi-Fi support, 802.11 b and g recommended
- Ability to detect hidden Access Points (recommended)
- GPS support (optional)

PC Agent requirements

- Windows XP, Vista or 7
- Wi-Fi support, 802.11 a,b,g and n recommended



Finlandsgatan 56
16474 Kista
SWEDEN
+46 8 7505655
www.airmobile.com
info@airmobile.se